

# Release and Installation Notes

## BEM 2K3 version 10.21.5

---

Document version 2: 20 June 2021.

### *Contents*

BEM and Toolbox Updates .....	1
Installation Procedure for the BEM 2K3 version 10.21.5 Package .....	2
Changes from 10.21.3 to 10.21.5.....	10
BEM .....	10
RRD .....	11
Changes from 10.21.1 to 10.21.3.....	11
Changes from 10.21.0 to 10.21.1.....	11
Changes from 3.10.21.0 to 10.21.0.....	11
Changes from 3.10.8 to 3.10.21.0.....	12
Operating System Requirements .....	17

### *BEM and Toolbox Updates*

To avoid any incompatibility problems and to enable all facilities, the Toolbox program you are running must be version 3.21.11 or later.

## Installation Procedure for the BEM 2K3 version 10.21.5 Package

Open the **2a BEM 10 Production 10-21-5.zip** file and save the **2a BEM 10 Production 10-21-5.msi** file in any convenient location.

Please do not proceed with the installation unless you have both your Registered User Code and the Upgrade Code applicable to this version.

Should you wish to purchase an upgrade to the BEM 11 series or have purchased an upgrade and do not have your User or Upgrade Codes, please contact [lyndon.downing@bigpond.com](mailto:lyndon.downing@bigpond.com)

**Any installed BEM version commencing with 10.21 or 3.10 MUST be removed via Control Panel, Programs and Features before installing this update.**

Note that 10.x versions of BEM can co-exist with 11.x versions. Recommended action is that all earlier versions of BEM are removed once 10.21.5 is successfully installed and run to avoid inadvertently running earlier version that will not be compliant with the current UCI and local Association Regulations.

### Removal Procedure

Note that screen shots may vary depending on the version of windows installed.

Click Start, Control Panel, Programs and Features (Add and Remove Programs in Windows XP)

Uninstall or change a program

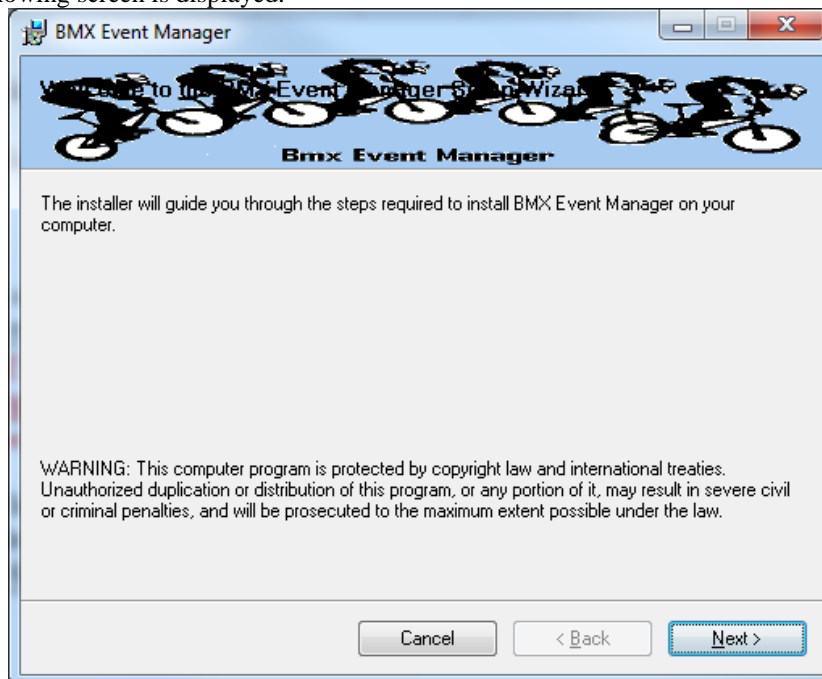
To uninstall a program, select it from the list and then click Uninstall, Change or Repair.

Name	Publisher	Installed On	Size	Version
BMX Event Manager	Bemman	21/01/2021	31.2 MB	10.21.1

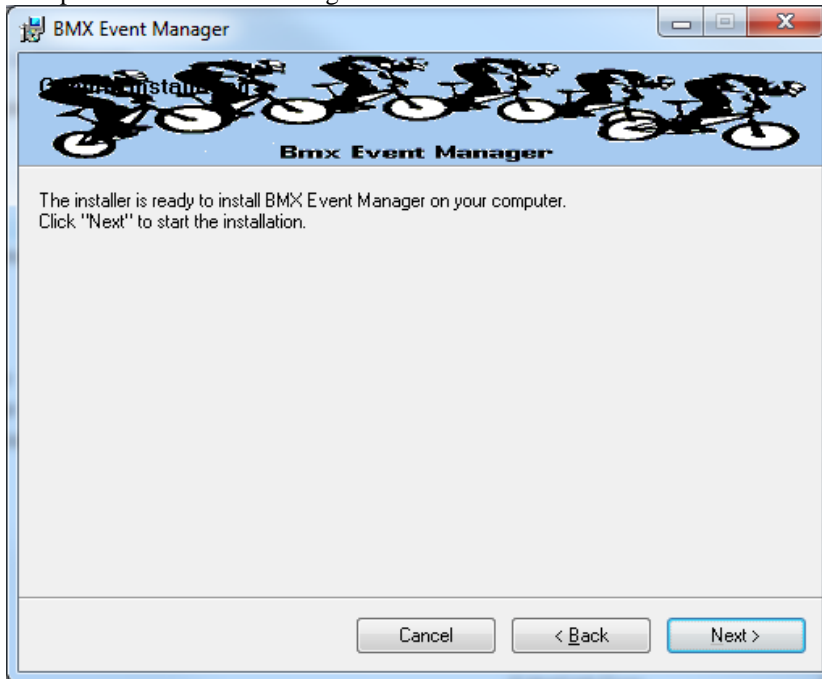
Right click on the selected Bem2K3 or BMX Event Manager then Left click on Uninstall. Answer Yes to any prompts required to complete the removal of the earlier version.

Double click on the **2a BEM 10 Production 10-21-5.msi** file saved earlier (see page 2) to start the installer.

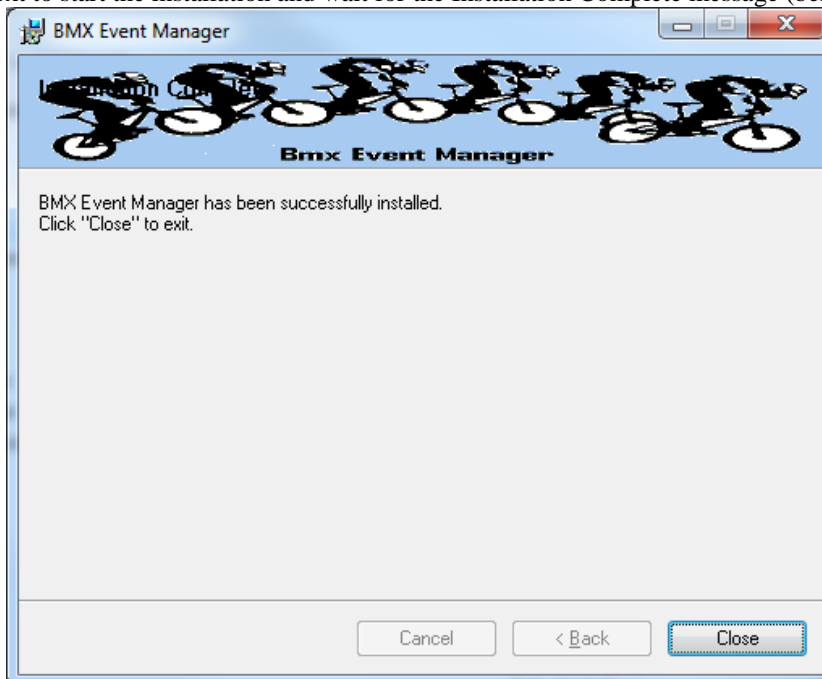
The following screen is displayed.



Click Next to proceed and the following screen is shown.



Click Next to start the installation and wait for the Installation Complete message (below).



Note that the installation is hardcoded into the folder structure:  
**C:\BEM\Programs\Event\3.10.x** for BEM and Series programs  
**C:\BEM\Programs\Report\3.10.x** for the RRD program.

If not done previously as per step 2.1 on page 19 of this document, Office 2007 and Office 2010 users should include the path C:\BEM\Programs in the Excel list of trusted locations.

The installation procedure installs the BEM, RRD and Series programs, adds the BMX Event Manager group in the Programs Menu and provides shortcuts on the Desktop.



Note: if the shortcuts are added but with default rather than the custom icons, please contact [lyndon.downing@bigpond.com](mailto:lyndon.downing@bigpond.com) for assistance to resolve this issue.



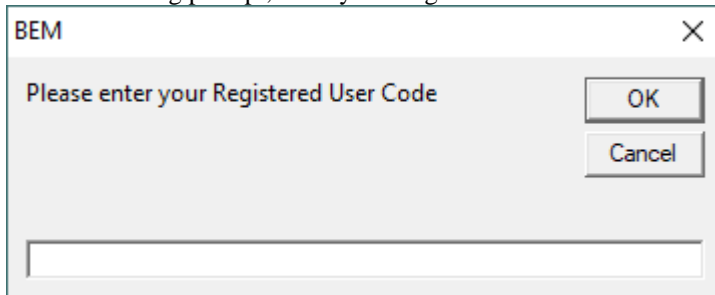
Double click on the BEM icon to start the program.  
Note that the registration status at the top left of the screen will always show “Unlicensed Copy” before the language selection is made



Select the required language option then click OK

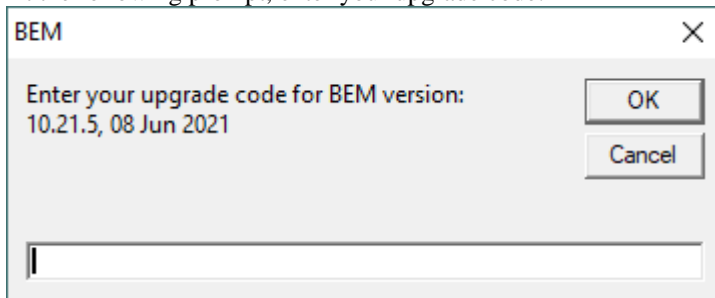
If you do not have a Registered User Code or Upgrade Code for this version then please contact [lyndon.downing@bigpond.com](mailto:lyndon.downing@bigpond.com)

At the following prompt, enter your Registered User Code



A screenshot of a dialog box titled "BEM" with a close button (X) in the top right corner. The main text reads "Please enter your Registered User Code". To the right of the text are two buttons: "OK" and "Cancel". Below the text is a single-line text input field.

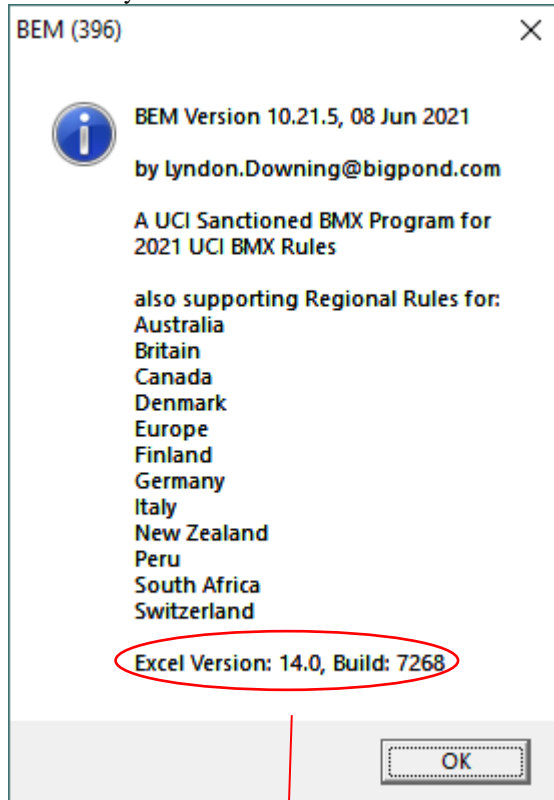
At the following prompt, enter your upgrade code:



A screenshot of a dialog box titled "BEM" with a close button (X) in the top right corner. The main text reads "Enter your upgrade code for BEM version: 10.21.5, 08 Jun 2021". To the right of the text are two buttons: "OK" and "Cancel". Below the text is a single-line text input field.

The BEM version and your PC's Excel version and build details will then be shown.

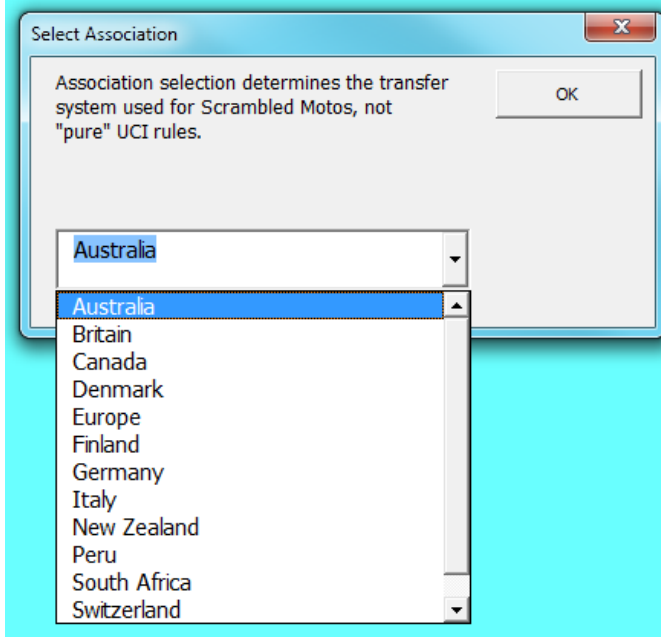
Check that your BEM version and date is as shown below.



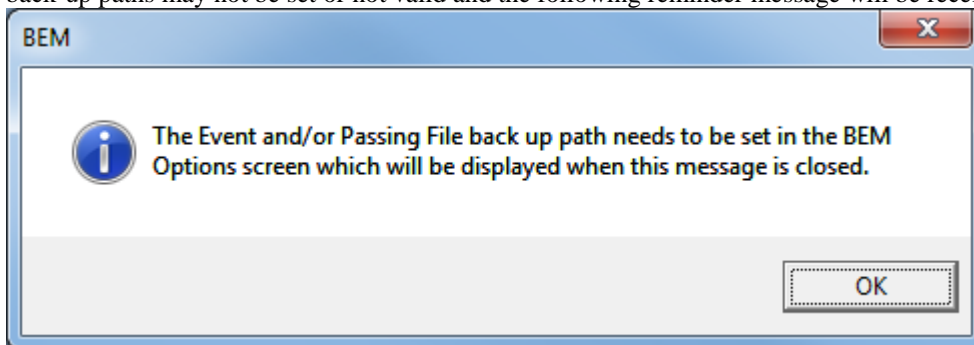
The banner also includes the Excel version and Build numbers running on your computer as a quick check that you have the latest Microsoft Office updates installed. If you do not have versions at least matching the following, there is a good chance that your version of Excel is not up to date and may result in unpredictable operation of the BEM program.

Version	Build	Comment
11.0	8404	Excel 2003, Service Pack 3+
12.0	6762	Excel 2007, Service Pack 2+
14.0	7268	Excel 2010, Service Pack 1+

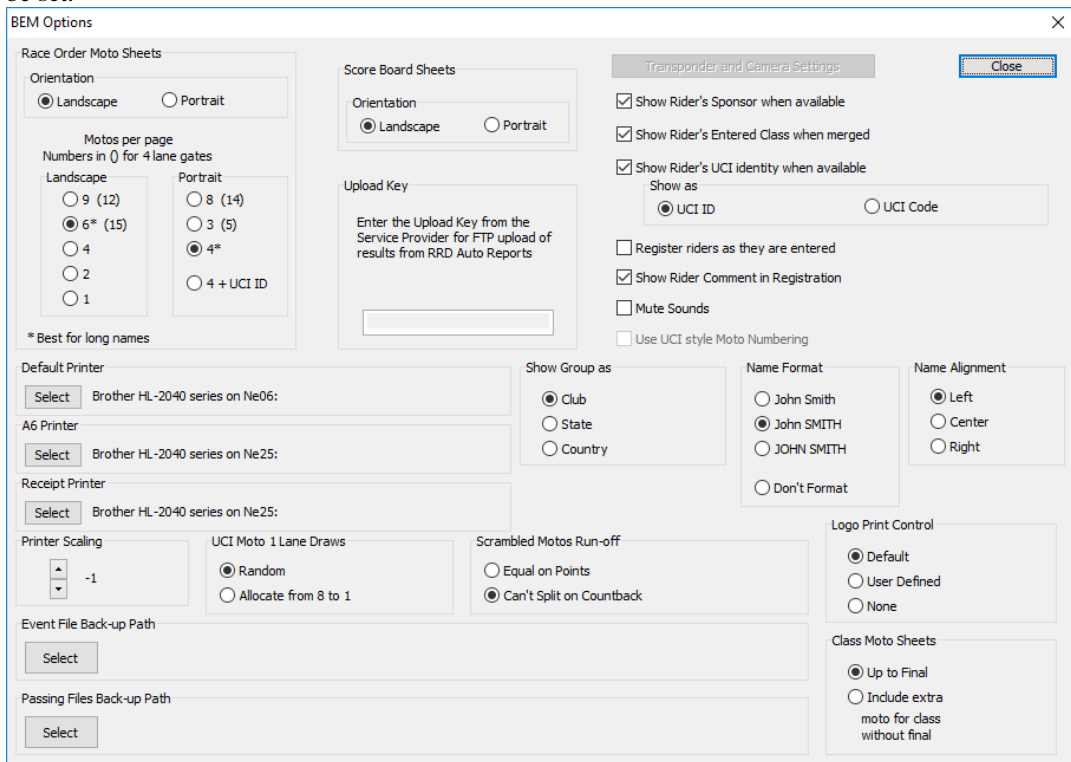
Select the appropriate Association / Region or UCI if used for other than the listed Associations.



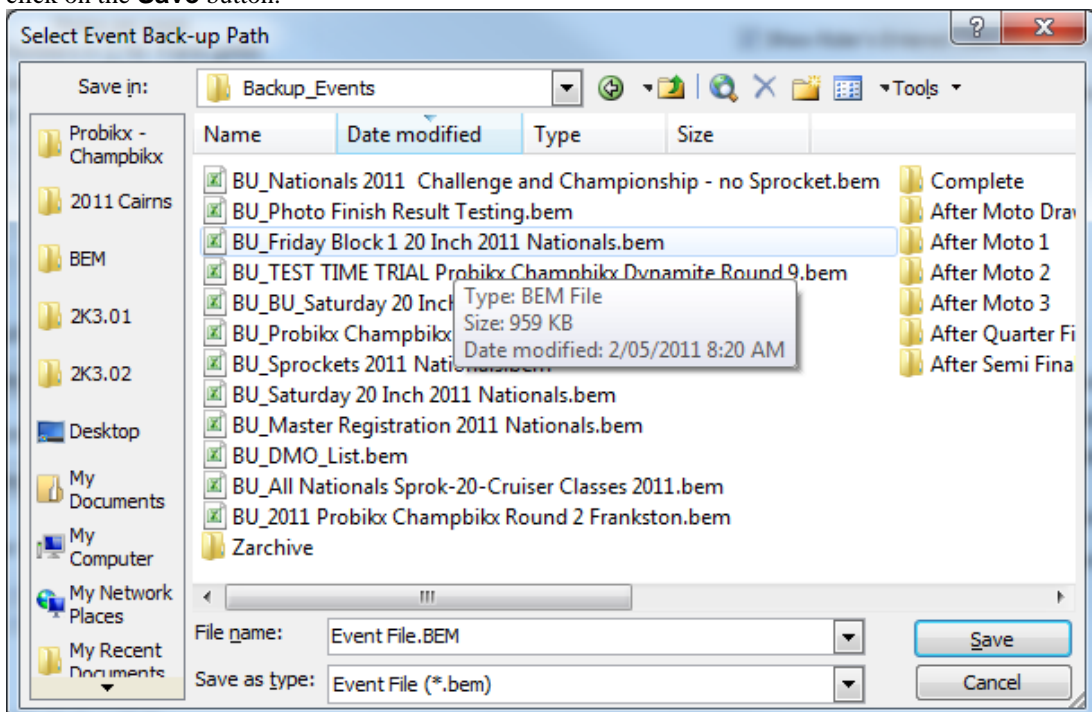
Note that the first time the BEM program is run as a first installation, the Event Files and Passing Files back-up paths may not be set or not valid and the following reminder message will be received.



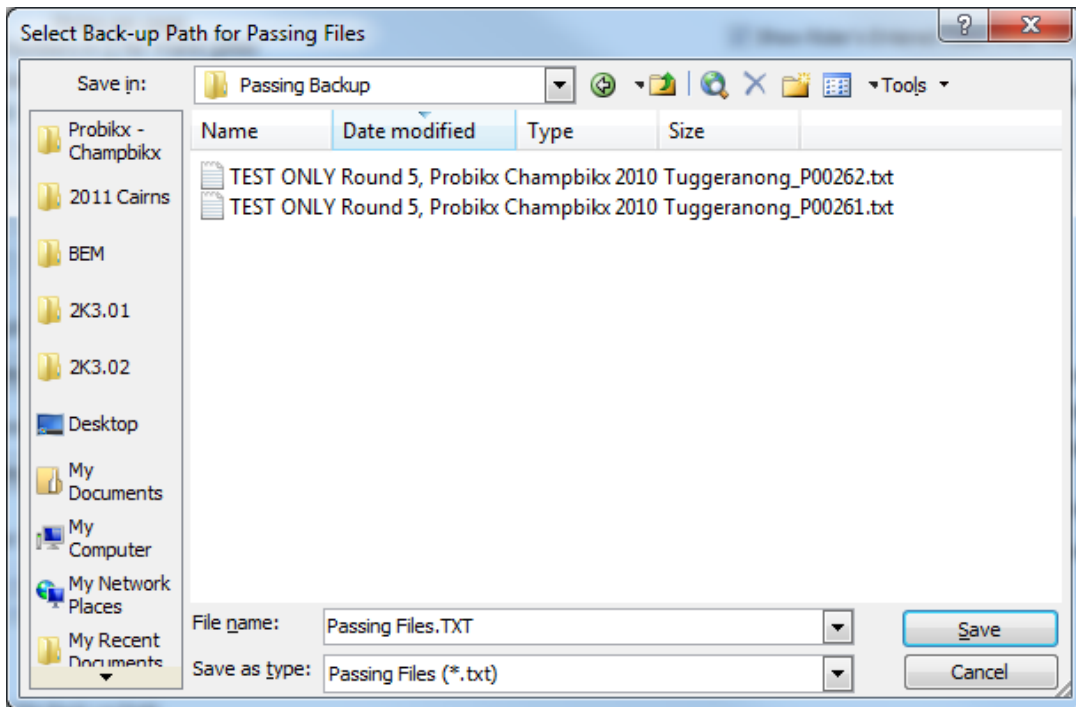
Note that the **Event File Back-up Path** and **Passing Files Back-up Path** are blank and need to be set.



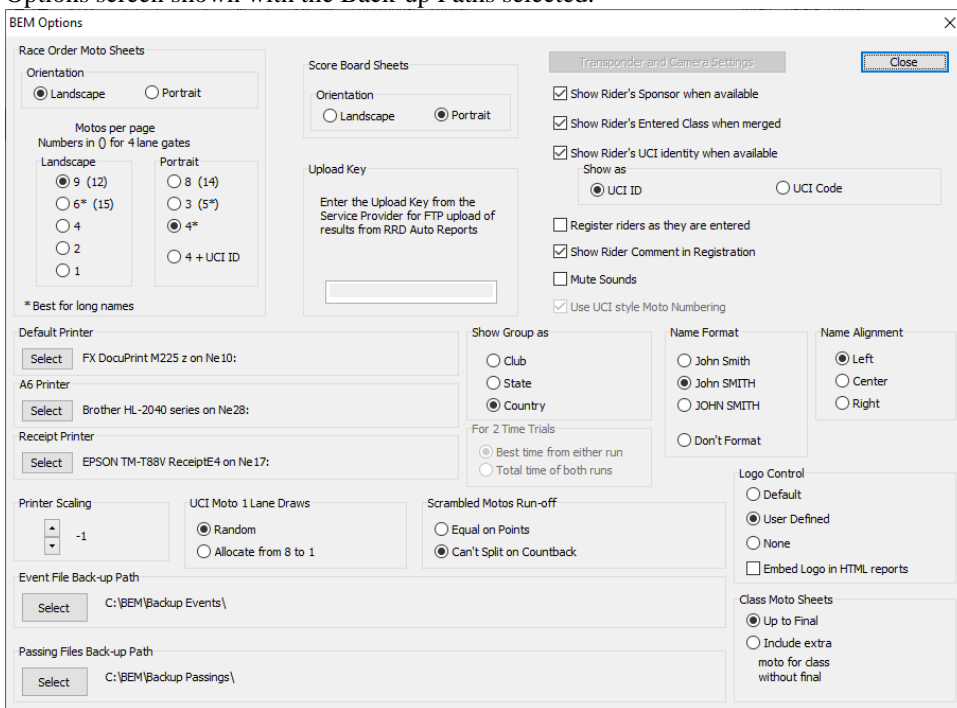
If you recoded the settings from an earlier version BEM installation restore those settings now. To select the paths, click on respective **Select** button, navigate to the required back up folder and then click on the **Save** button.







Options screen shown with the Back-up Paths selected.



Once the Event File Back-up and Passing File Back-up paths are selected and the Scrambled Motos Run-off setting is made you can close the options screen and select an Event File.

## Changes from 10.21.3 to 10.21.5

### BEM

- Adds a new facility to generate operator initiated Json format Start List reports from the Moto Sheets group.

Finals Menu: Red Bull UCI Pump Track World Championships Qualifier

Enter Results

Select Class Select Round Select Race Exit

Process Stage

One Class All Classes

Select Stage

Run Off (End Motos)  
 Shootout and ABA  
 Transfer to Moto 2  
 Transfer to Moto 3  
 First Final - All Classes  
 TT SuperFinal  
 1/32 Final  
 1/16 Final  
 1/8 Final  
 1/4 Final  
 Run Off (QF to SF)  
 Semi Final  
 Run Off (SF to Final)  
 Final

Moto Sheets

One Moto One Class Race Range Multi Ranges

Start each class on a new page  
 BEM  
 Score Board Sheets  
 JSON Start List

Commentary - Sponsor

Port  Land  
 Gate Check  
 L2R  R2L

Excel Report File

Create  UCI Results (DataRide)  UCI Results (Info Strada)  British Cycling Ranking

Result Sheets

One Moto One Class Race Range Multi Ranges

Races / page

9 (landscape)  
 4 (portrait)  
 1 (3 pencillers)  
 .5 (5 pencillers)

A6 Paper

Pencilling  
 Race Summary

Report Type

Preview  Printer  HTML  
 Copies 1 Auto Scroll  
 Clipboard  Collate  Scroll

List Results

One Class All Classes

Report Type

Moto Points  
 Moto Results  
 One Round  
 Final Place  
 Final Results  
 Full Results  
 Top 8  
 Time Trial  
 Newspaper (J. Smith)  
 Newspaper (John Smith)

All Classes per

Moto Order  
 Final Order  
 Class Order

Start each class on a new page  
 Show Lap Times when available  
 Show Start Reaction when available

Lap Time and Split Time

Lap Time Split Time

Fastest 50 Times  
 Fastest 50 Riders  
 Fastest Time per Rider per Class  
 All Times for All Classes

- Adds a new facility to generate spontaneous Json format individual race results from the BEM Results Entry screen. The spontaneous Json reports are in addition to the existing spontaneous HTML reports with both reports stored in the C:\BEM\AutoReports\BemScore folder.

Enter Results: Red Bull UCI Pump Track World Championships Qualifier

Event F1

Class Men Moto Final Heat BIG FINAL

NAME	PLATE	PLACE	POINTS	LAP TIME	TOTAL POINTS	SPLIT TIME
Bruno SCHMIDT	136	1st	1	23.095	0	0.000
Peter FREEMAN	168	2nd	2	24.384	0	0.000

Race Comment  
15:12:10

Transponder and Camera Control

Single Import Import Now Settings Review Passings Lap Time

Auto Accept  
 Auto DNS DNF  
 Auto Import  
 Auto Run Round

Select Auto Import Transponder Passings Files

Passings File 1 C:\BEM\Passings\StartFinish\StartFinish.txt

Passings File 2

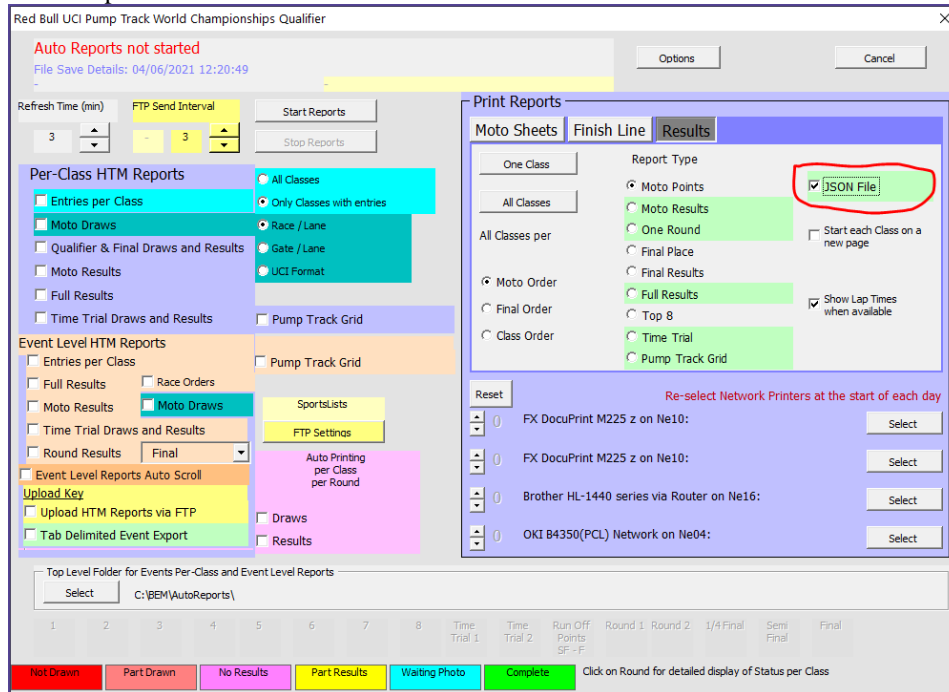
Auto Print Report Selection

Auto HTML + JSON Results, Each Race  
 0 Results, Each Race  
 0 Results, Each Class  
 1 Run Off  
 0 Class Next Stage

Accept without check  
 Accept Read Back Clear  
 Race Next Previous Class Race  
 Next on Accept  
 Anticipate DNS  
 Set Place by Time  
 Stopwatch Pop up  
 Auto Read Back  
 Auto Process Stage  
 15 min Finish to Score Check  
 Write Lynx LIF on Accept  
 Do not select Write Lynx if you don't know what this option does!  
 Riders Sorted by  
 Plate  
 Moto Points  
 Name

## RRD

- Adds a new facility to generate operator initiated Json format results from Auto Reports menu. The available Json reports are highlighted when the JSON File option is selected I.e.
  - Moto Results
  - One Round
  - Full Results
  - Time Trial
  - Pump Track Grid



### Changes from 10.21.1 to 10.21.3

- Protective patch to prevent an error when scanning a QR code when the cursor is not in the licence number field.
- Correction to prevent an error when doing an “Update Details” where either a Category or Club is not selected.
- Correction to the Series program where an error can occur for a printed series report where a Series Sponsor is specified.
- Update to the Json Start List reports from RRD.
  - Time Trial report now has a selectable format to show either single riders in start order or grouping of riders per category.
  - Correction to the Final round start list where the Json format had a syntax error for categories with more than a single A final.

### Changes from 10.21.0 to 10.21.1

- Updated Event Sanctioning data for non BMX AusCycling memberships and EntryBoss default membership levels.
- Add operator warning in RRD should the system generated “Upload Complete” message fail when auto upload of results to SportsLists is used.  
Note that this issue has only been seen on Windows 7 computers missing a Microsoft update. Should you receive this error, please contact [Lyndon@moto-sheets.com](mailto:Lyndon@moto-sheets.com) for details to apply the Microsoft solution.

### Changes from 3.10.21.0 to 10.21.0

- For Australian users, added legacy Cycling Australia and MTBA membership levels in the entry validity check against the event sanctioning level.

- Change in version numbering convention reflecting the two BEM streams.  
First number indicates the stream:  
10.xx.xx series for general release.  
11.xx.xx series, restricted distribution to licenced timing company operators.

xx.21.xx Second number indicates the rule compliance year.

xx.xx.1 Third number is the incremental release number.

For the most part, the 10 and 11 series updates will be released concurrently.

#### RRD

- In the Json start list reports, separate Category, Round and Heat into separate fields.
- Correct display issues in the SportsLists results where:
  - Individual stage results did not always show the correct heat in the draw information.
  - Full results for Sprocket categories and classes without a final may not always have the moto results data matching the headings.

### **Changes from 3.10.8 to 3.10.21.0**

- Update for compliance with UCI 2021 Rule changes.
- Updated program registration requirement requiring both the Registered User and Upgrade Codes to be entered to activate each update.
- For Australian users, provides the first what is anticipated to be several incremental updates for AusCycling as their systems and API access evolves.
  - Add AusCycling membership type checking against the 2021 AusCycling Rule Book event sanctioning.
  - Adds QR code scanning of AusCycling virtual membership cards.
  - Changes the method of validation of an entrant's membership type for event eligibility by cross referencing the membership type with the event sanctioning level.
  - Encrypted local database Rider List File (complementary changes in Toolbox 3.21.0) per specified security requirements by AusCycling.
- Correction to a debug error that occurs when generating a Time Trial report where two timed runs are used, the better time from the two is used and any rider has a lap time > 59.999 seconds.
- Added a Groups and Runs export for Orbits5 (X2 decoders) which has different requirements to the existing Orbits Cycling export.
- Changed the field allocations in the Orbits Groups and Runs export to avoid conflicts when multiple categories are exported to the one Practice session. Field "No" now contains the race plate number and "registration" the internal BEM Tlink number which is unique for each entry.

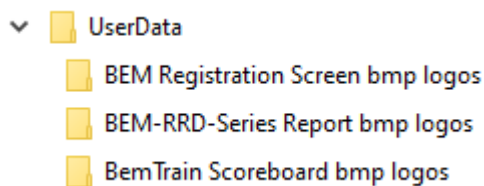
- Added logos to the Registration screen to allow for sponsor visibility. The default logos can be replaced with up to four user specified .bmp logos.

Screenshot shows default logos with Australia as the Association selection.

To add you own logos, put the appropriate .bmp files in **C:\BEM\UserData\BEM Registration Screen bmp logos** folder and change the logo option to User Defined.



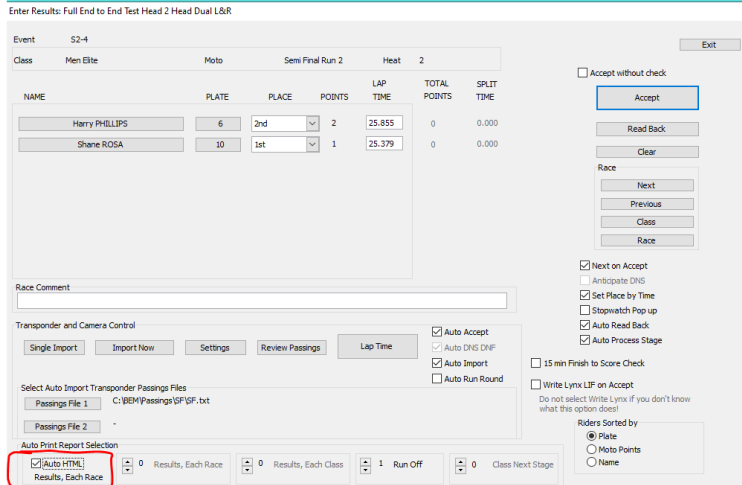
- Changed user defined logo files for left and right headers from .jpg to .bmp for consistency across BEM and BemTrain with specific folders provided under the C:\BEM\UserData folder for each function for easier management of the logo files.



- The Add Entries / Review Entries screen while looking similar to previous versions, has been replaced in this update to allow the Rider List file to exceed the previous 32K limit.
  - A change has been made to the way the report creation time and date is formatted to give consistency across PCs with different time, date, language and region settings.
  - Minor layout change to the Registration screen Register & Print button providing a colour change and more space around button. This change was from a request from an innovative operator who came up with the idea to maintain Covid social distancing where registration is not done by transponder passings, to use an iPad as a secondary touch screen registration monitor and having riders click (touch) the button to register themselves.
  - Corrected a bug in some earlier versions where the Comment field could be overwritten with garbage data.
  - Correction to an issue introduced in an earlier update where finals sheets may not print correctly where there is a mixture of additional moto (e.g. 4<sup>th</sup> moto) and finals run in the final round.
  - Added a new facility to the Series Program to meet a Latvian series scoring requirement to award different moto place based points for classes with and without a final.
- Note that the Series .bsr file must be built on a minimum proforma version of 5.3 to enable the new facility. The proforma is located at:

**C:\BEM\Programs\Event\3.10.x\Proforma2K3-53.bsr**

- Added a new facility to auto generate per race HTML result files as each race is scored.

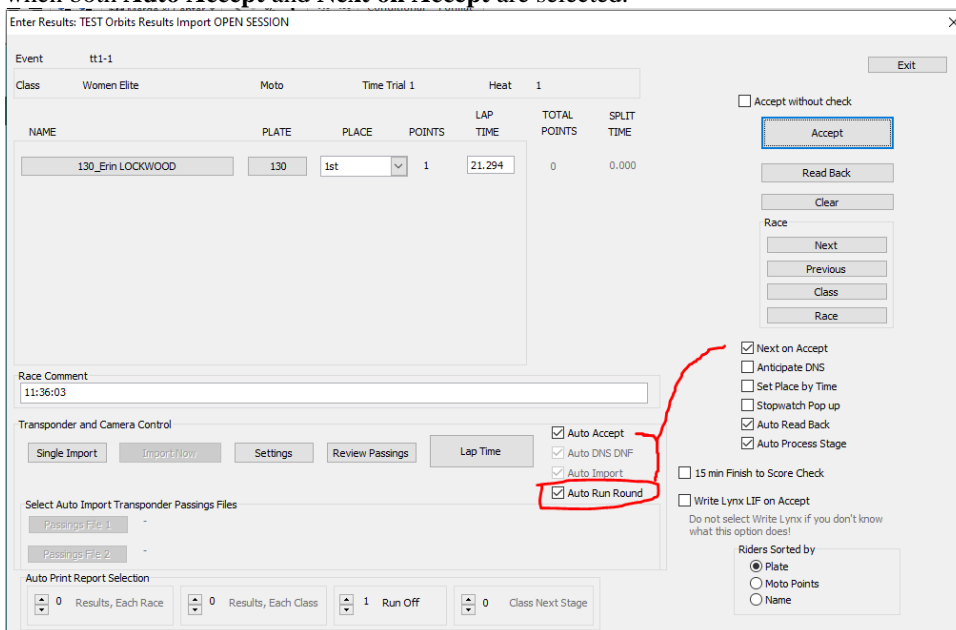


Note that all reports have a common file name so each will be over-written when the subsequent race is scored. The file is saved into the C:\BEM\AutoReports\BemScore\ folder. E.g.

Men Elite, Final Heat BIG FINAL Run 2

PLATE	COUNTRY	NAME	TOTAL	Run 1	Run 2
10	AUS	Shane ROSA (100 095 262 89)	48.666	24.222	24.444
13	AUS	Andrew HUGHES (100 102 090 87)	49.332	24.999	24.333

- Update to the logo options to allow for:
  - Header Right logo to be included on HTML Reports in both BEM and Series.
  - Addition of logos to Series printed reports.
  - An option to embed logos in HTML reports (at the expense of much larger files) so that the logos will still be shown when the HTML file is opened on other than the BEM PC.
- Added a new facility to streamline accepting results in BEM after importing an Orbits Results File. The facility is enabled with the new **Auto Run Round** option in Results Entry that can only be enabled when both **Auto Accept** and **Next on Accept** are selected.



Can be used with any situation where normal passings or Orbits Results are imported before scoring  
The operating process is:

- Score the round for the class in Orbits Cycling
- Export results from Orbits to a text file.
- Use the Single Import in BEM to import the Orbits results (aka lap times).

- With the first race in the round for the class in the Enter Results window, select Auto Accept, Next on Accept and Auto Run Round then click on Lap Time.  
Assuming there are no errors encountered, all races in the round for the class will be scored.
- Update to licence scanning for Germany to work with their 2020 licence barcode format to exclude additional non-licence number information.
- Addition of new race start methods using the first loop passing as the start and timing each rider individually. I.e. Staggered Start in the MyLaps Orbits parlance.

To facilitate the operator selection of the new facilities, the Transponder and Lynx options form has been revised incorporating the previous tick box for “Simulate Start Gate Records” into the new Start Method selection.

The options are:

- **Gate Start**  
The default option per previous versions where the race time is started for all riders in the race by a gate start signal and then a single pass over an optional Hill loop and then the Finish loop.
- **Simulate Start Gate**  
For use where races use a Gate Start but there are technical problems when the Start Gate passing records are NOT available. This is the same as ticking the “Simulate Start Gate Records” in earlier BEM versions.
- **Start/Finish – Staggered**  
For a track configuration with a common Start/Finish loop. E.G.



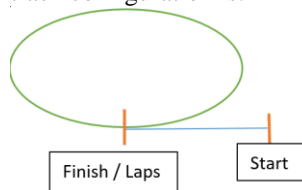
Time starts individually for each rider from the first passing. The operator selects the number of times the loop is crossed to complete the run allowing for multiple laps or where the loop is crossed multiple times to complete the run. E.g. for a figure of 8 pump track.

- **Start to Finish – Staggered**  
This option caters for two track configurations depending on the operator selection of the number of times the Finish loop is crossed for each run.

Where the finish line is crossed once the notional track configuration is:



Where the operator specifies more than one crossing of the finish loop per run, the notional track configuration is:



I.e. the start loop is crossed only once and the finish loop crossed the specified number of times to complete the run.

For both of these Start to Finish – Staggered configurations, the time starts individually for each rider when they cross the Start loop and finishes after the specified number of crossings of the Finish loop.

- Added a new option where two time trials are run to use either the best time (previous default) or the cumulative time.

- Addition of a new xml export type in BEM to create a Groups and Runs xml import file for Orbits / Orbits Cycling with the provision to select Practice or Race format, set the Orbits race, lap and timing settings and scheduled Start Date & Time with the option to increment the time for each run (individual BEM race) in the export.  
This addition allows events to be managed with BEM and use Orbits for live web and/or scoreboard facilities and for timing where complex track configurations are required.
- Heading in reports that showed “GROUP” changed to reflect the operator selection of Club, State or Country.
- Change “Class” to “Category” in many reports to reflect UCI terminology usage.
- Update the data export for RaceResult
  - Delimiter changed from Tab to ; (race|result convention)
  - Changed heading from Sex to Gender.
  - Added UCI ID into ATF 3 field.
  - Added Class\_No to be used as Contest in race|result 1 1
  - Removed unused fields from the export

#### RRD

- Corrected a fault where in Auto Reports, a Time Trial report was attempted to be created in an event that did not have any classes configured for Time Trial.
- Replicate auto generated html upload reports in Json format when uploading to SportsLists.
- In Auto Reports, both Time Trial start lists and Add Time Trial Results reports are generated with the Time Trial selection.
- Time Trial report selection added to the Event Level reports.
- Heading in reports that showed “GROUP” changed to reflect the operator selection of Club, State or Country.

#### SERIES

- Allow for Rider Ranking to be used as the ultimate tie-break in association with count-back on best results from applicable rounds.(BMXA 2020 National Series requirement).
- Where overall place after the motos stage is selected, a new option allows for inclusion or exclusion of an extra moto where Federation rules provide for an extra moto for a class of 8 or less.
- Update Series proforma to version 5.2 to accommodate the additional data required for the ranking tie-break.



## Operating System Requirements

The recommended PC environment is:

**Operating System:** 32 or 64 bit versions of Windows XP, Vista (OK but best avoided if possible), Windows 7 and for Windows 8 & 8.1 and Windows 10, full versions, not the RT tablet versions.

If you are using BEM in a networked environment to run transponder timing or the RRD program, use of the Professional rather than the Home versions of Windows are strongly recommended.

**Microsoft Office:** Office 2010 (recommended), Office 2007 or Office 2003.

Note that BEM does not run on Office 2013, 2016 or Office 365 as Microsoft have not maintained full backwards compatibility with Office 2010, 2007 and 2003 versions.

For new PCs that come pre-installed with an Office version later than 2010, the following options are suggested.

1. If you don't have a specific requirement for the new facilities in the pre-installed version Office and haven't paid the licence fee for that:
  - a. Totally remove Office from the PC.
  - b. Buy and install a legitimate version of Office 2010 from eBay or from a download retailer such as [https://www.ecrater.com.au/p/30522352/microsoft-office-2010-pro-plus-32-64-bit?gps=1&id=115926669379&keywords=&gclid=CjwKCAjwm4rqBRBUEiwAwaWjjK60coZew2EOxi9W\\_eodOHFfGc8FKc4vya1IbS3VT41eix1YEFxqnBoCRJgQAvD\\_BwE](https://www.ecrater.com.au/p/30522352/microsoft-office-2010-pro-plus-32-64-bit?gps=1&id=115926669379&keywords=&gclid=CjwKCAjwm4rqBRBUEiwAwaWjjK60coZew2EOxi9W_eodOHFfGc8FKc4vya1IbS3VT41eix1YEFxqnBoCRJgQAvD_BwE)  
or  
[https://theunitysoft.com/product/office2010proplus/?gclid=EAIaIQobChMI07\\_I7NXN4AIVGK6WCh2pWwWhEAYYBCABEgJcpvD\\_BwE](https://theunitysoft.com/product/office2010proplus/?gclid=EAIaIQobChMI07_I7NXN4AIVGK6WCh2pWwWhEAYYBCABEgJcpvD_BwE)

Typically a legitimate licence is available for around \$10 - \$30, significantly cheaper than the Office 365 / 2016 licence that Microsoft would like you to purchase.

2. If you need to keep the pre-installed Office version on the PC with either Win7, Win8 or Win 10.
  - a. Do a partial installation of Office 2010 installing only Excel 2010 which will happily co-exists with later Office versions.
  - b. To get BEM to open with Office 2010 when you also have later Office versions installed then either:
    - i. Open Excel 2010 before clicking on the BEM icon.
    - ii. Set up your own shortcuts to BEM, RRD, Series and Toolbox that direct to Office 2010. Note that in some PCs, particularly non-english language versions of Windows, the path to Office14 Excel may be different to this example.

Typical Shortcut Target when Office is a 32bit installation

**BEM**

"C:\Program Files (x86)\Microsoft Office\Office14\EXCEL.EXE" "C:\BEM\Programs\Event\3.10.x\Bem2K3.xls"

**RRD**

"C:\Program Files (x86)\Microsoft Office\Office14\EXCEL.EXE" "C:\BEM\Programs\Report\3.10.x\Rrd2K3.xls"

**Series**

"C:\Program Files (x86)\Microsoft Office\Office14\EXCEL.EXE" "C:\BEM\Programs\Event\3.10.x\Series2K3.xls"

**Toolbox**

"C:\Program Files (x86)\Microsoft Office\Office14\EXCEL.EXE" "C:\BEM\Programs\Toolbox\BEM\_Toolbox3.xls"

Typical Shortcut Target when Office is a 64bit installation

**BEM**

"C:\Program Files\Microsoft Office\Office14\EXCEL.EXE" "C:\BEM\Programs\Event\3.10.x\Bem2K3.xls"

**RRD**

"C:\Program Files\Microsoft Office\Office14\EXCEL.EXE" "C:\BEM\Programs\Report\3.10.x\Rrd2K3.xls"

**Series**

"C:\Program Files\Microsoft Office\Office14\EXCEL.EXE" "C:\BEM\Programs\Event\3.10.x\Series2K3.xls"

**Toolbox**

"C:\Program Files\Microsoft Office\Office14\EXCEL.EXE" "C:\BEM\Programs\Toolbox\BEM\_Toolbox3.xls"

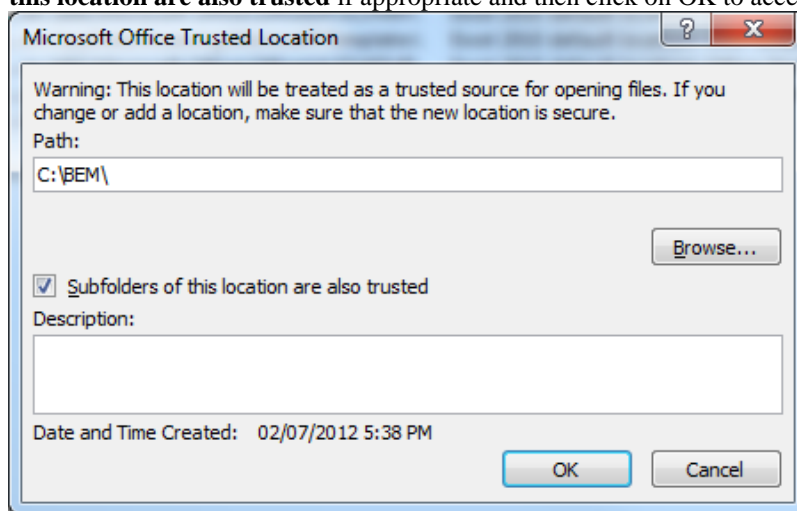
To add these shortcuts to the start menu, copy and paste or create the shortcuts in the following 'Hidden' folder:

C:\Users\username\AppData\Roaming\Microsoft\Windows\Start Menu\Programs

Now open Start Menu > All apps and locate the shortcut(s) you placed. Right-click on it and select Pin to Start.

The following preparatory actions if not already implemented from earlier releases of BEM will avoid compatibility problems.

1. Download and install the latest applicable Office 2003 / 2007 / 2010 service packs and updates. This is very important as there is a history of unpredictable operation should the latest Microsoft updates not be installed.
2. For users running Office 2007 and Office 2010.
  - 2.1. Include the C:\BEM path and any other locations where you save BEM files in the list of Excel Trusted Locations.  
Method:
    - 2.1.1. Open Excel.
    - 2.1.2. Select **File** then **Options**.
    - 2.1.3. Select **Trust Center**.
    - 2.1.4. Click on **Trust Center Settings...** button.
    - 2.1.5. Click on **Add new location...** button and add any required paths and select the **Subfolders of this location are also trusted** if appropriate and then click on **OK** to accept and close the dialog



- 2.1.6. . • Click on **OK** to close each of the dialogs until back in Excel which now can be closed.